



15 Drovers Way, Barnham PO22 0DD

£550,000 Freehold



4 Bedrooms



2 Bathrooms



2 Reception Rooms

Sw

Sims Williams

Key Features

- Detached Family House
- Bright & Spacious
- Kitchen/Dining Room
- Cloakroom/WC
- Study/Play Room
- 4 Double Bedrooms
- En-suite to Main
- Family Bathroom/Wc
- South-East Facing Garden
- Garage & Driveway Parking

EPC Rating

Current = C

Potential = B

Council Tax Band

Band = E

Tenure - Freehold

There is an estate management charge of approximately £200 per annum to cover maintenance of the common areas and public liability insurance.

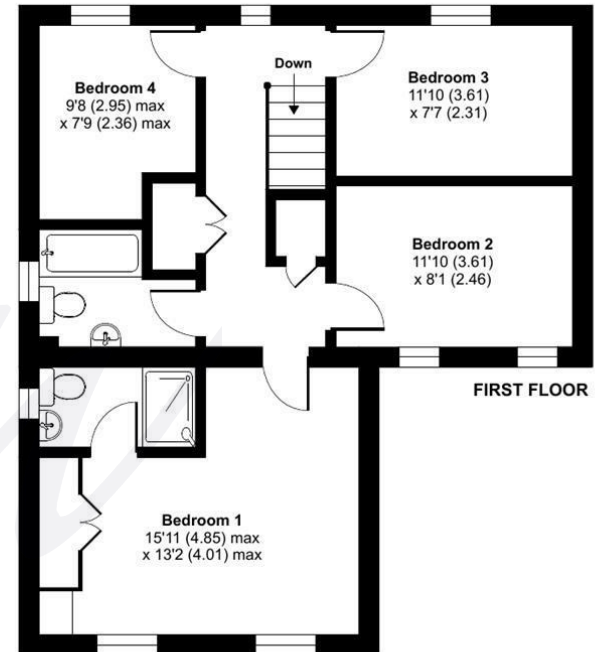
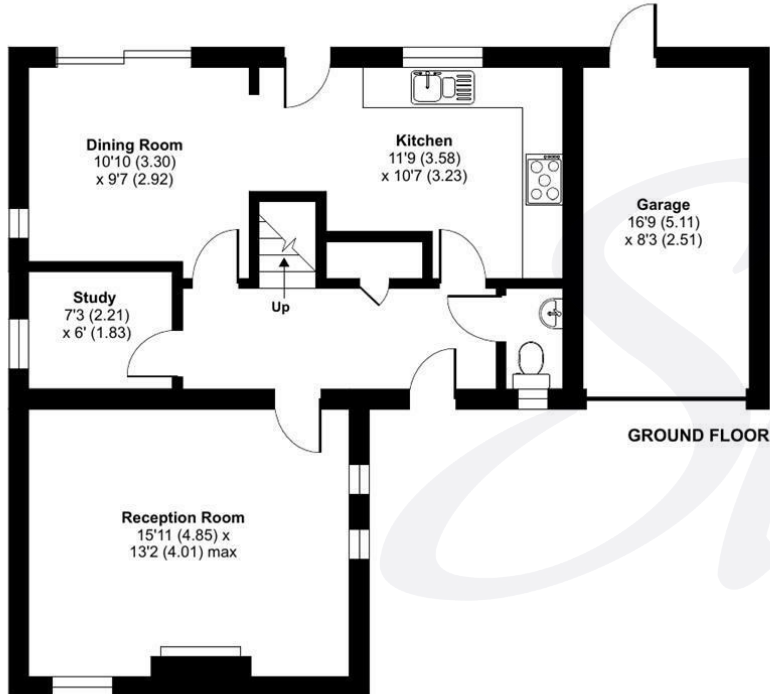


Approximate Area = 1312 sq ft / 121.8 sq m

Garage = 133 sq ft / 12.3 sq m

Total = 1445 sq ft / 134.2 sq m

For identification only - Not to scale



Floor plan produced in accordance with RICS Property Measurement 2nd Edition,
Incorporating International Property Measurement Standards (IPMS2 Residential). © nitchecom 2025.
Produced for Sims Williams. REF: 1250976





simswilliams.co.uk

CHICHESTER

8-9 Southgate

Sales 01243 787868

Lettings 01243 836055

chichester@simswilliams.co.uk

WALBERTON

5 Maple Parade

Sales 01243 551368

Lettings 01243 836055

walberton@simswilliams.co.uk

ARUNDEL

8a High Street

Sales 01903 885678

Lettings 01903 881133

arundel@simswilliams.co.uk

BOGNOR REGIS

46 High Street

Sales 01243 862626

Lettings 01243 836055

bognor-regis@simswilliams.co.uk

Viewing Strictly by arrangement via the vendor's agent Sims Williams 01243 551368. These particulars are believed to be correct but their accuracy is not guaranteed and they do not form part of any contract.